



CELEBRATING
29 YEARS

**PHILADELPHIA
INTERNATIONAL
MUSIC CAMP &
FESTIVAL**

GUIDEBOOK

JUNE 20 – JULY 3, 2026
& JULY 18 – 31, 2026

PROGRAMS IN
***PHILADELPHIA,
MIAMI, ITALY***

Study with Members of
THE PHILADELPHIA ORCHESTRA

Under the Direction of Kimberly Fisher | Principal Second Violin | The Philadelphia Orchestra
A program of Sandy Marcucci International Camps, Inc.



THE US ARMY FIELD BAND PARTNERS WITH
THE PHILADELPHIA INTERNATIONAL MUSIC FESTIVAL
TO SHOWCASE PIMF COMPETITION WINNERS FROM
THROUGHOUT THE UNITED STATES AND AROUND
THE WORLD.

**COMPETITION AGE
DIVISIONS/PRIZES:**

**Grand Prize: Full Scholarship to
PIMF Summer Program**

Junior Division (Ages 6-11)

Division Winner: \$1200 Scholarship to
PIMF Summer Program

Young Artists Division (Ages 12-15)

Division Winner: \$1500 Scholarship to
PIMF Summer Program

Senior Division (Ages 16-19)

Division Winner: \$1800 Scholarship to
PIMF Summer Program

**Runner up and third place for each
division are awarded \$500 scholarships
to PIMF.**

**The first 25 entries in each division are
awarded \$150 scholarships.**

**VIRTUAL CONCERTO
COMPETITION**

The Philadelphia International Music Camp & Festival (PIMF), featuring members of The Philadelphia Orchestra, has been hosting live international competitions for over 25 years.

In 2020, PIMF launched a Semi-Annual Virtual Concerto Competition (now in its sixth season) - welcoming hundreds of talented musicians from throughout the United States and around the world to compete online.

Winners of each division receive partial scholarships to the Philadelphia International Music Festival. The Grand Prize Winner receives FULL TUITION SCHOLARSHIP. All division winners are awarded an invitation to perform in the annual PIMF WINNERS CIRCLE CONCERT, which regularly includes performances from Principal Players from The Philadelphia Orchestra.

PIMF awards over \$20,000 in scholarships in each virtual competition. PIMF also hosts live competitions at its summer festivals in Philadelphia, Pennsylvania, and Cremona, Italy.

For additional information or to enter visit: [PIMF.org](https://pimf.org).




Photo Courtesy of suebphotography.com

6

SUMMER PROGRAM OPTIONS AT PIMF

SYMPHONY ORCHESTRA PROGRAM

SENIOR DIVISION: 14 – 19

YOUNG ARTISTS DIVISION: 11 – 13

JUNIOR DIVISION: 8 – 10

SOLO PERFORMANCE PREPARATION

AGES 13 – 19

PIANO STUDIES

AGES 13 – 19

CHAMBER MUSIC INTENSIVE

AGES 13 – 19

COLLEGE AUDITION PREPARATION

HIGH SCHOOL STUDENTS ONLY

VIOLA INTENSIVE PROGRAM

TWO DIVISIONS: AGES 11 - 19

STUDENTS MAY ATTEND ANY PIMF PROGRAM
AS A RESIDENT, DAY, OR EXTENDED-DAY
PARTICIPANT.

See website for details, or call 856.875.6816.

One-week options are also available for
most programs.

A ONCE IN A LIFETIME OPPORTUNITY

The Philadelphia International Music Festival offers student musicians from around the world the unique opportunity of spending up to six weeks in Philadelphia, PA; Miami, FL; or Cremona, Italy – immersed in performance training with members of the world-renowned Philadelphia Orchestra.

Our outstanding programs are designed for musicians eight to nineteen years of age and include: private lessons, master classes and faculty recitals with members of The Philadelphia Orchestra; daily orchestra, ensemble, and chamber music rehearsals; daily course electives including: conducting, choir, composition, sight reading, music theory, ear training, and jazz ensemble; solo performance and competition opportunities; and more.

Evenings are filled with faculty and student performances, master classes, and competitions. Each festival ends with a Grand Finale open to friends, family, and music lovers of all ages.

PIMF ARTISTIC DIRECTOR
KIMBERLY FISHER
PRINCIPAL SECOND VIOLIN
THE PHILADELPHIA ORCHESTRA



Photo Courtesy of suebphotography.com

PAST CONDUCTORS HAVE INCLUDED:

Thomas Hong

Music Director

Penn Symphony Orchestra

University of Pennsylvania

Louis Scaglione

President & Music Director

PYO Music Institute

Cristian Măcelaru

Music Director, Cincinnati Symphony &

Orchestre National de France

Kensho Watanabe

Former Assistant Conductor

The Philadelphia Orchestra

AND OTHERS

PROGRAM DATES:

JUNE 20 - JULY 3, 2026

SENIOR DIVISION ONLY

JULY 18 - 31, 2026

SENIOR, YOUNG ARTISTS

& JUNIOR DIVISIONS

SYMPHONY ORCHESTRA PROGRAM

JUNE 20 – JULY 3, 2026 & JULY 18 – 31, 2026

Highlights include:

- Private lessons, master classes, and faculty recitals with members of **The Philadelphia Orchestra**
- Daily orchestra rehearsals
- Daily Chamber Music Program (optional)
- Daily Music Electives including: conducting, composition, sight reading, music theory, and ear training
- Numerous solo performance and competition opportunities
- Off-campus outing to Philadelphia Orchestra concert
- Movie Night and other free-time activities
- Gala Grand Finale Concert featuring all Philadelphia International Music Festival orchestras

The PIMF Symphony Orchestra program includes multiple ensemble levels. Auditions are processed on a rolling basis.

Visit PIMF.org for details!



PROGRAM DIRECTOR:



Gloria dePasquale

Gloria dePasquale joined The Philadelphia Orchestra's cello section in 1977 at the invitation of Eugene Ormandy. Prior to that she served as associate principal cello of the Buffalo Philharmonic under Michael Tilson Thomas and was also a substitute player for the Boston Symphony and the Boston Pops Orchestra.

Mrs. dePasquale is an advocate for music education both at The Philadelphia Orchestra, where she formerly chaired the Education Committee, and in the Philadelphia Youth Orchestra, where she is artistic advisor to the organization and artistic advisor and conductor of the PRYSM and PRYSM Young Artist orchestras.

PROGRAM DATES:
JULY 18 – 31, 2026

856.875.6816 | EMAIL: INFO@PIMF.ORG

COLLEGE AUDITION PREPARATION PROGRAM

FOR HIGH SCHOOL STUDENTS ONLY

While still participating in PIMF's flagship Symphony Orchestra program, students will benefit from an informative daily College Audition Preparation seminar led by renowned educator Gloria dePasquale.

All students in the CAP program are required to prepare for (and participate in) mid-festival mock auditions, adjudicated by principal players and other members of The Philadelphia Orchestra.

Each student accepted to CAP also receives a personalized consultation with program director Gloria dePasquale.

SAMPLE DAILY SCHEDULE:

9:30am–12:00pm:	Orchestra Rehearsal
12:50pm–1:50pm:	LUNCH
1:00pm–2:00pm:	Private Practice or Optional Daily Music Course
2:00pm–3:00pm:	Daily College Audition Preparation Seminar
3:15pm–5:15pm:	Chamber Music Rehearsals or Additional Private Practice
5:30pm:	Dinner
7:00pm:	Concerts, Special Events, Master Classes & Faculty Recitals with Members of The Philadelphia Orchestra, Solo Performance & Competition Opportunities



Photo Credit: Rubén Mariblanca Nieves

PIANO STUDIES PROGRAM FACULTY MEMBERS



SVETLANA SMOLINA
INTERNATIONAL PIANO SOLOIST
—JUNE SESSION—



YU XI WANG
DIRECTOR OF KEYBOARD STUDIES
CURTIS INSTITUTE OF MUSIC
—JULY SESSION—

PROGRAM DATES:
JUNE 20 – JULY 3, 2026 &
JULY 18 – 31, 2026

856.875.6816 | EMAIL: INFO@PIMF.ORG

CONNECT WITH US



PIANO STUDIES PROGRAM SPONSORED BY: CUNNINGHAM PIANO COMPANY

AGES 13-19 / BY AUDITION ONLY

Designed for intermediate and advanced level pianists, the **PIMF Piano Studies Program** includes: three lessons weekly with members of our world-class faculty; daily master class; daily duet class; three-four hours of required daily private practice; daily chamber music option; daily course selection of: conducting, composition, music history, or music theory; solo performance and competition opportunities; evening recitals with piano soloists and principal players from The Philadelphia Orchestra.

The Piano Studies Program at PIMF fills to capacity most sessions. Early application is recommended.

See website for details.



**Cunningham
Piano
Company**

ALL PIANOS ARE PROVIDED BY PHILADELPHIA'S PRESTIGIOUS CUNNINGHAM PIANO COMPANY AND ARE MADE AVAILABLE FOR PURCHASE AT THE CONCLUSION OF EACH PIMF SUMMER SESSION.



SAMPLE DAILY SCHEDULE

9:30am–12:00pm: Orchestra Rehearsal

12:00pm–12:50pm: LUNCH

12:50pm–1:50pm: Private Practice or
Optional Daily Music Course

2:00pm–3:00pm: Chamber Music Seminar

3:15pm–5:15pm: Chamber Music Rehearsal/
Off-Campus Performances

5:30pm–6:30pm: DINNER

7:00pm–Evening Concert or Special Event

The Chamber Music Intensive Program includes a concerto competition through which winners perform as soloists with the **United States Army Field Band**, the **New York Session Symphony**, or other professional/community orchestra.

PROGRAM DATES:
JULY 18 – 31, 2026

CHAMBER MUSIC INTENSIVE

AGES 13-19 | BY AUDITION ONLY

The **Chamber Music Intensive** is designed to train young musicians to serve their respective communities through interactive chamber music performance. This exciting program also offers training in leadership and entrepreneurship skills - essential tools for young musicians planning a career in classical music.

The Chamber Music Intensive Program provides select high school students the hands-on, industry-specific mentoring necessary to enable young musicians to become successful, engaging, and compassionate chamber musicians - prepared to contribute to the vibrancy of their own home communities *through interactive chamber music performance and engagement*.

Please note that the Chamber Music Intensive Program is available in our July Session only and is open only to students participating in the two-week session (July 18 – 31, 2026).

856.875.6816 | EMAIL: INFO@PIMF.ORG

CONNECT WITH US



As part of the community engagement training in the PIMF Chamber Music Intensive musicians perform in assisted living facilities, libraries, cafes and/or other community sites in and around Philadelphia's prestigious Main Line.



SAMPLE DAILY SCHEDULE

9:30am–12:00pm: Private Practice, Private Lessons, Accompanist Workouts

12:00pm–12:50pm: LUNCH

12:50pm–1:50pm: Private Practice or Optional Daily Music Course

2:00pm–3:00pm: Solo Performance Class

3:15pm–5:15pm: Chamber Music

5:30pm–6:30pm: DINNER

7:00pm–Evening Concert or Special Event

The Solo Performance Preparation Program includes a concerto competition through which winners perform as soloists with the **United States Army Field Band**, the **New York Session Symphony**, or other professional/community orchestra.

PROGRAM DATES:
JUNE 20 – JULY 3, 2026 &
JULY 18 – 31, 2026

ONE WEEK PROGRAMS AVAILABLE
IN JUNE SESSION ONLY

SOLO PERFORMANCE PREPARATION PROGRAM

AGES 13-19 / BY AUDITION ONLY

Students participating in the **Solo Performance Preparation Program** spend 7 or 14 days in intense study, including: up to six private lessons with members of our world-class faculty – including principal players and other members of The Philadelphia Orchestra; daily thirty-minute workouts with a faculty accompanist; daily chamber music rehearsals; three to four hours of required daily private practice; daily faculty-led solo performance classes; optional daily music classes including: conducting, composition, sight reading, music theory and ear training; master classes and faculty recitals featuring members of The Philadelphia Orchestra; ample solo performance and competition opportunities; and more.

The PIMF Solo Performance Preparation Program – the most competitive of our many programs – fills to capacity most sessions. EARLY AUDITION RECOMMENDED.

The Solo Performance Preparation Program is open to all instruments, excluding piano.



SAMPLE DAILY SCHEDULE

9:30am–12:00pm: Orchestra Rehearsal

12:00pm–12:50pm: LUNCH

12:50pm–1:50pm: Viola Intensive Seminar

2:00pm–3:00pm: Sight Reading

3:15pm–5:15pm: Chamber Music
Rehearsals (optional)

5:30pm–6:30pm: DINNER

7:00pm: Concerts, Special Events, Master
Classes & Faculty Recitals with members
of The Philadelphia Orchestra, Solo
Performance & Competition Opportunities

Open dialogue is encouraged as participants discover
the many options available to them in their current and
future relationship with the viola.

PROGRAM DATES:
JULY 18 – 31, 2026

856.875.6816 | EMAIL: INFO@PIMF.ORG

VIOLA INTENSIVE PROGRAM WITH DR. ALICE LINDSAY

AGES 11 - 19 / BY AUDITION ONLY

Both the **Viola Intensive Program** and the new **Viola Intensive Program—Advanced Level** are designed to equip violists with the tools necessary to serve them at each respective level of development. This exciting program will review, enhance, and uncomplicate the natural growth process.

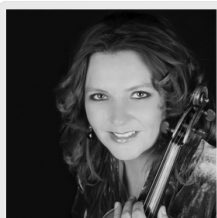
In addition to supporting the skill level of each student, the VIP initiative will encourage each student's uniqueness, motivate his or her curiosity, and introduce and explore a wide range of opportunities throughout the developmental process.

This hands-on course will also support the necessary requisites to enhance the right-hand and left-hand sequential learning that leads to: playing with ease, developing a beautiful tone, shifting with confidence, understanding vibrato, and appreciating the viola as it emerges to significant recognition and popularity.

Transcribed Bach Cello Suites will be incorporated for players at all levels to introduce their value as audition material. Additional repertoire will be recommended to **violists of all levels** to consider as they progress.

VIP—Advanced Level includes a personalized hour-long orchestral audition preparation session with Dr. Alice Lindsay to review District, Regional, and All-State audition materials *particular to each student's district, region, and state.*

ABOUT OUR FACULTY



ABOUT OUR ARTISTIC DIRECTOR

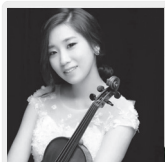
Kimberly Fisher, Principal Second Violin of **The Philadelphia Orchestra**, has appeared as soloist with numerous orchestras including The Philadelphia Orchestra, the Vancouver Symphony, and the Victoria Symphony. As recitalist and chamber musician she has performed across the United States and Canada, and in England, Spain, France, Germany, Japan, China, Vietnam, and Argentina. Ms. Fisher has appeared in chamber music settings in prestigious venues such as Carnegie Hall, the Mogador Theater in Paris, the Kimmel Center, and the Great Hall of the People in Beijing, and in collaborations with internationally renowned artists such as Wolfgang Sawallisch, Cristoph Eschenbach, Jean-Yves Thibaudet, and many others.

Ms. Fisher is an active pedagogue whose students have performed as soloists with major orchestras, attended distinguished music conservatories, performed as members of professional orchestras, and won many awards and competitions. Her energetic, communicative teaching style has led to invitations to present master classes, lessons, and seminars around the world. Her teachers have included her father, Lawrence Fisher; Yumi Ninomiya-Scott; Aaron Rosand; David Cerone; and Jascha Brodsky.

OUR MASTER CLASS & TEACHING FACULTY REGULARLY FEATURES OVER 30 MEMBERS OF THE PHILADELPHIA ORCHESTRA, INCLUDING:



Juliette Kang
First Associate
Concertmaster



Christine Lim
Associate
Concertmaster



Marc Rovetti
Assistant
Concertmaster



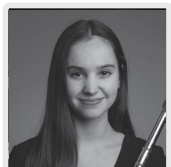
Kerri Ryan
Assistant
Principal Viola



Hai-Ye Ni
Principal
Cello



Gabriel Polinsky
Associate Principal
Bass



Olivia Staton
Second Flute



Jeffrey Lang
Associate
Principal Horn



Matthew Vaughn
Co-Principal
Trombone

VISIT PIMF.ORG FOR FULL FACULTY LISTING



The Winter Solo Performance Intensive includes:

- Four hour-long private lessons with members of our world-class faculty, including members of The Philadelphia Orchestra
- Daily solo performance classes
- Daily thirty-minute workouts with assigned faculty accompanist
- Four-five hours of required daily private practice
- Evening Master Classes with members of The Philadelphia Orchestra and others
- Festival-Concluding Grand Finale Recital
- Fabulous gourmet-style meals including daily High Tea at 3:00 p.m.
- Transportation to/from Miami International Airport available

WINTER SOLO PERFORMANCE INTENSIVE

DECEMBER 29, 2025 – JANUARY 3, 2026 | MIAMI, FLORIDA

The Winter Solo Performance Intensive (Music in the Mansion) is designed for intermediate to advanced student musicians 13-19 years of age preparing for upcoming solo performances and competitions.

Music in the Mansion includes: four private lessons with PIMF faculty, including members of The Philadelphia Orchestra; daily 30-minute workout sessions with assigned faculty accompanists; daily hour-long solo performance classes; five hours of required daily private practice; and a week-ending Grand Finale Recital.

Students will reside in the beautiful mansion shown above while enjoying fabulous gourmet-style meals daily, including High Tea at 3:00 p.m. each afternoon.

Young musicians participating in the **Winter Solo Performance Intensive** are surrounded by beauty and excellence so that they can focus the entirety of their attention on performance training throughout the duration of the program.

PROGRAM DATES:

DECEMBER 29, 2025 – JANUARY 3, 2026
MIAMI, FLORIDA



VISIT THESE CITIES AND MORE

Florence



Brescia



Sirmione



PHILADELPHIA INTERNATIONAL MUSIC FESTIVAL - ITALY

AUGUST 4 – 14, 2026

The Philadelphia Interantional Music Festival – Italy

is designed for intermediate to advanced musicians 14-19 intermediate to advanced musicians 14-19 years of age preparing for upcoming solo performances and competitions. This exciting program (now in its second season) includes three private lessons, daily 30-minute workout sessions with an assigned faculty accompanist, daily hour-long solo performance classes, five hours of required daily private practice, and a week-ending Grand Finale Recital in one of the stunning performance halls in Cremona.

Students and families will both reside in Cremona, Italy, enjoying authentic Italian-style meals throughout the week-long program. While students are in training, guests attending the "Family & Friends" program will tour the surrounding towns via Luxury Motorcoach. Destinations include: Milan, Verona, Brescia, Florence, Genoa, Sirmione, and Erbusco! Students will join the traveling adventures at the conclusion of the Grand Finale performance – touring with the full group from August 12 through August 14.

PROGRAM DATES:

AUGUST 4 – 14, 2026

CREMONA, ITALY

ABOUT OUR MUSIC CAMPS

The Philadelphia International Music Festival is a summer music camp that offers students of all ages and skill levels the unique opportunity of spending up to four weeks immersed in classical music education and performance training with members of The Philadelphia Orchestra.

For nearly 30 years, young musicians have attended PIMF from throughout the U.S. and from nations around the world, including: Argentina, Australia, Austria, Brazil, Bulgaria, Canada, China, Colombia, Croatia, Ecuador, France, Georgia, Germany, Greece, Haiti, Hong Kong, India, Israel, Italy, Ireland, Jamaica, Japan, Latvia, Macedonia, Mexico, New Zealand, Norway, Panama, Philippines, Poland, Puerto Rico, Romania, Russia, Singapore, South Korea, Spain, Sweden, Switzerland, Taiwan, Thailand, Trinidad & Tobago, Turkey, UAE, Ukraine, United Kingdom, Vietnam, and elsewhere.

These musicians have gone on to study at such outstanding institutions as: Curtis Institute of Music, Cleveland Institute of Music, Eastman School of Music, James Madison Univ., The Juilliard School, Manhattan School of Music, Mannes College, Miami Univ., National Conservatory of Music - Mexico, Peabody Conservatory, Princeton Univ., Rice University - Shepherd School of Music, Rome Conservatory of Music, Royal Academy of Music, Temple Univ. - Boyer College of Music, U.C.L.A., Univ. of Pennsylvania, and many others.

The festival includes six Program Options: Symphony Orchestra, Chamber Music Intensive, Solo Performance Preparation, College Audition Preparation, Viola Intensive and Piano.

PIMF also hosts dynamic solo performance camps in **Miami, Florida** and **Cremona, Italy**.

ABOUT OUR PRESIDENT & CEO



Sandy Marcucci is the co-founder of both Atlantic Cape Camps – the feature of an ESPN special aired throughout the United States and abroad – and the **Philadelphia International Music Festival, featuring members of The Philadelphia Orchestra**. Through her innovative marketing and media campaigns, Sandy has facilitated sports and music programs and clinics in Wayne, Pennsylvania; Miami, Florida; Paris, France; London, England; Brussels, Belgium; Reykjavik, Iceland; Groznjan, Croatia; and Cremona, Italy.

Ms. Marcucci, former Assistant Director of Communications for the New Jersey General Assembly and former staff member at the National Defense Council Foundation in Washington, D.C., first acquired an interest in international marketing while studying at the American University of Paris and Sorbonne University. She is a past-member of the Friends Board at the Curtis Institute of Music.



*PROGRAMS IN
PHILADELPHIA,
MIAMI, ITALY*

**Visit PIME.org For
Information On Our
Virtual Concerto
Competition!**

**Study with Members of
THE PHILADELPHIA ORCHESTRA**

A program of Sandy Marcucci International Camps Inc.
856.875.6816 | PhiladelphiaMusicFestival.org